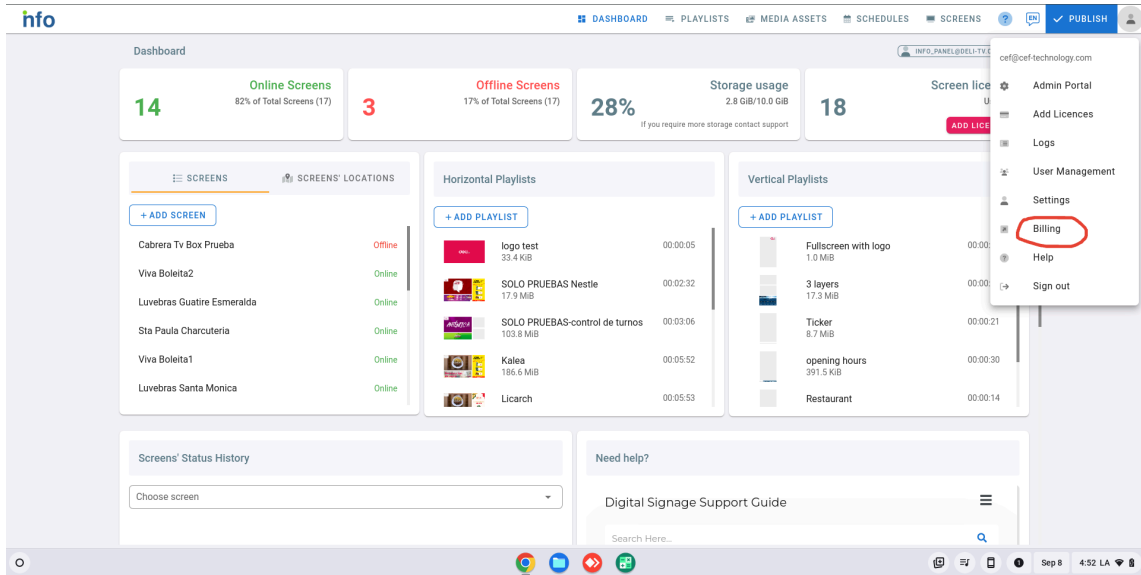


## INFO Signage player installation guide

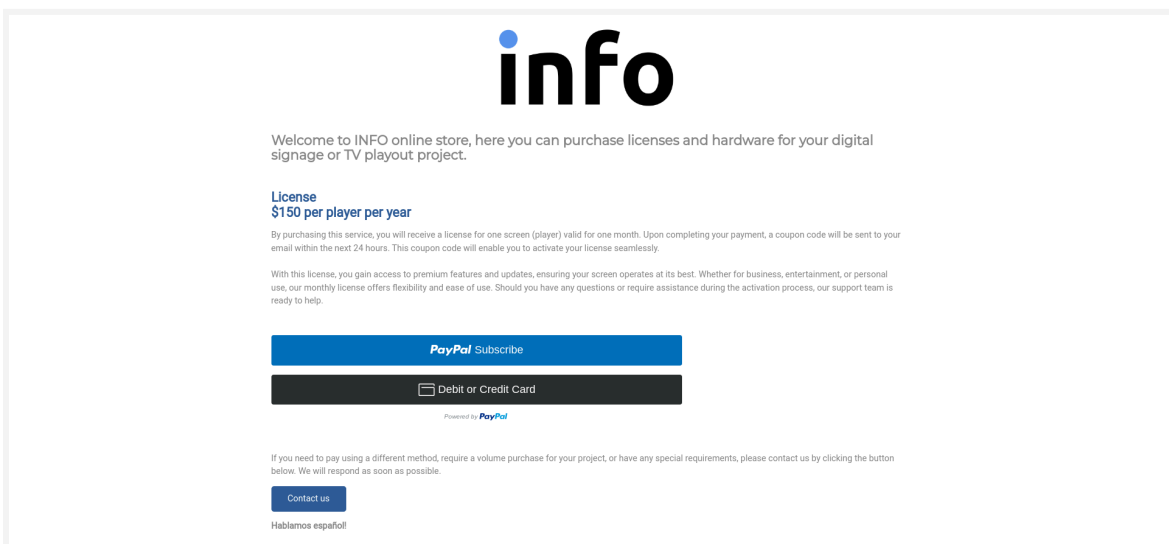
Please follow this instructions in order to obtain, install and configure your INFO Signage players:

### 1. Buy player licenses:

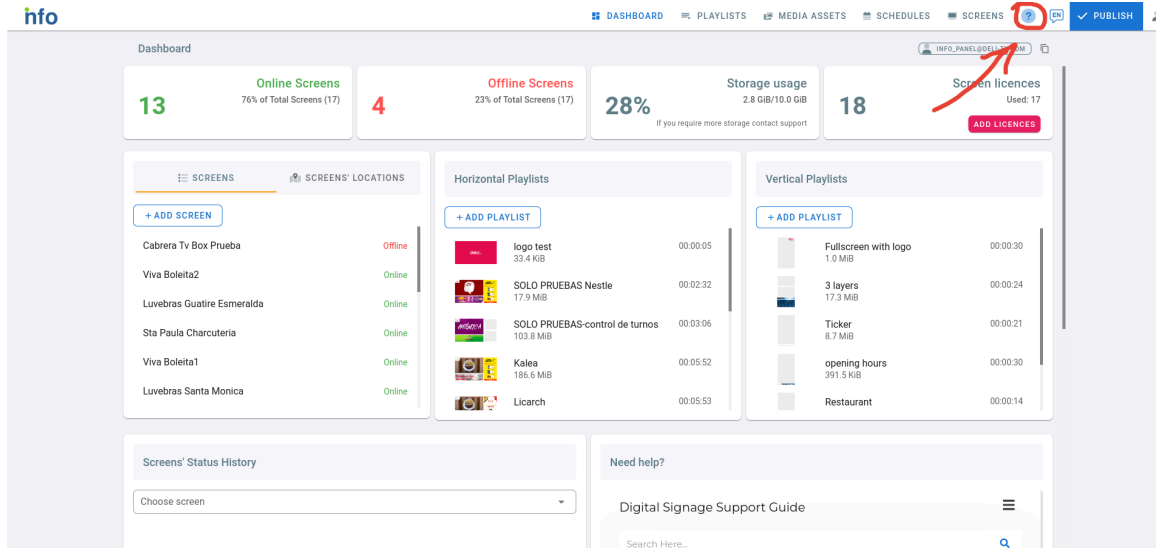
Once you create your account with INFO panel (<https://panel.info-signage.com/>) you have included one license for one player for one month. You can buy more licenses at the BILLING section in your panel.



The BILLING link will lead you to the payment site, where you will be able to pay for more licenses or contact us for special pricing requests based on volume.

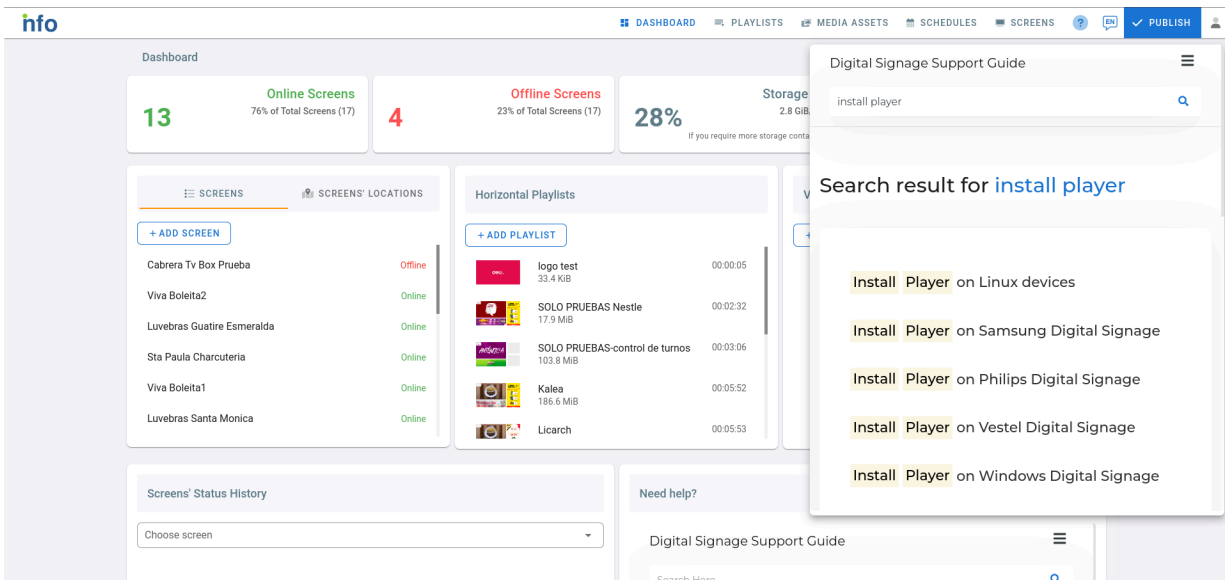


After purchase, you will be able to add your new players to your panel, the activation process may take up to two hours. You may look for detailed instructions at the panel's HELP section.

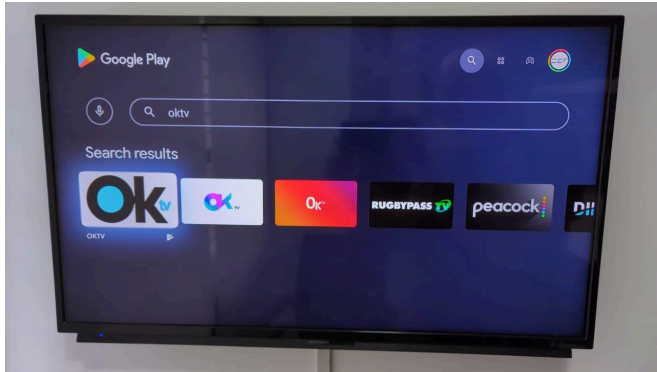


## 2. Install the app in your player

Once you enter the HELP section, type "INSTALL PLAYER" on the search bar, you will obtain instructions for all the players that we have available.



For **GoogleTV**, you may not find INFO Signage app on Playstore, in this case, you may search for OKTV by CEFTECH, enter to this app and scroll down to find INFO listed as “other apps from this developer”



If you need special support services, please contact us here: <https://cef-technology.com/#contact>